



EP-N7503

4G Wireless Router

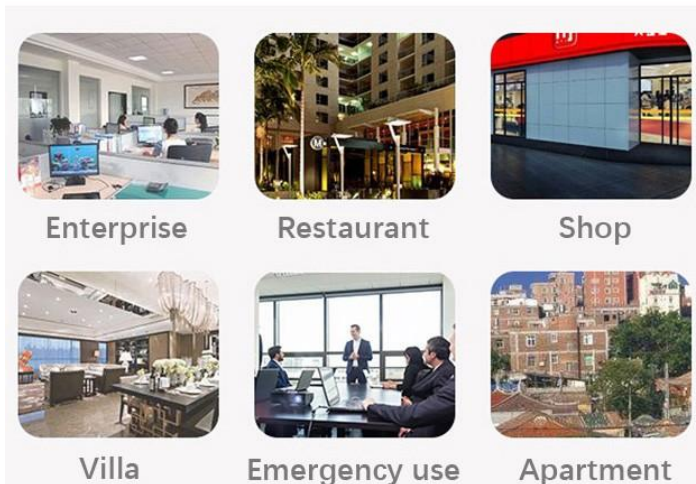
COPYRIGHT ©2023

EP-N7503

The EP-N7503 is a high-performance wireless router developed for 4G network access, the device has a high-performance processor, which can deal with various network protocols and network data at a high speed, works at 4G to wired, 4G to WiFi and other operating modes, supports hardware watchdog and internet hot-backup and other practical features, people can get high-speed stable uninterrupted internet through our product.

The product can work with a variety of 4G modules to access different operators' networks, it is applicable to dormitory, apartment, villa, hotel, property management office, store and other home&commercial scenarios.

Multi-scenario Quick setup



Flexible and cost-effective

Compatible with 3G/4G, supports 4G to wired and 4G to WiFi, plug and play, designed to meet the internet access scenarios like fast deployment required, network backup for emergency, hard to do wiring and mobile internet access, etc.

Professional software&hardware design

Through dedicated design of hardware and software, our product can provide the round-the-clock uninterrupted high quality service in various home&commercial scenarios.

- Built-in high performance industrial module, compatible with 3G/4G
- CAT 4 high speed
- Intelligent hot backup to ensure uninterrupted internet
- Failure detecting(auto reboot), reboot on schedule
- VPN client



COPYRIGHT ©2023

Specifications

CPU/Memory

CPU	MT7628NN
RAM	64M
ROM	8M

4G

CAT	CAT4
Compatibility	4G / 3G
4G rate	150Mbps DL / 50Mbps UL
Frequency(optional)	EAU:LTE: B1/B3/B5/B7/B8/B20/B38/B40/B41, WCDMA: B1/B5/B8 NA:LTE:B1/B2①/B3/B4/B5/B7/B8/B28/B40,WCDMA: B1/B2/B5/B8

WLAN

Standard	IEEE 802.11 a/b/g/n
Frequency	2.4 Ghz
Radio mode	MiMo 2x2
Transmit Power	17±2dBm
Data rate	300Mbps
Sensitivity	11n : -70dBm@10% PER, 11a : -72dBm@10% PER 11g : -72dBm@10% PER 11b: -88dBm@8% PER

Antenna

4G	External 5dBi 4G antenna●x2
WiFi	2 x 3dBi 2.4 Ghz antenna

Interfaces

Wire	1 x 10/100M RJ45 WAN/LAN port, 2 x 10/100M RJ45 LAN port
Card slot	1 x SIM Card Socket
LED	1 x Power, 2 x LAN, 1 x WAN, 1 x Wireless, 1 x 4G, 1 x Internet
Other	Reset Button x 1

Software

Operating mode	Bridge, Router, Wireless station,●Wireless repeater,●3G/4G mode
Internet method	5G/4G, WAN(Static IP, DHCP client, PPPoE client)
Services	DHCP Server, DHCP Relay, DDNS
Network techniques	Port forwarding, DMZ, UPnP, VPN(L2TP/PPTP, Static routing
Security defense	IP filtering, MAC filtering, URLfiltering, Port-scanning defense, SYN flooding attack
QoS	IP based
Other	Quick installation guide

Physical

Dimension(folded)	225 x 158.5 x 40 mm
Weight	235 g
Mounting	Desktop/Wall mount

COPYRIGHT ©2023

Power

Power supply	12V/1A DC
Power source	100 – 240V AC, 50/60Hz
Power consumption (max)	10 W

Environmental

Operating temperature	-20°C ~ +55°C
-----------------------	---------------

Humidity	0 ~ 90 % (non-condensing)
----------	---------------------------

Regulatory

Certification	Other
---------------	-------

Package contains

Router	1
--------	---

12V 1A DC Adapter	1
-------------------	---

Other	Other
-------	-------

EP-N7503

Copyright © 2023 All Rights reserved.

Every effort is made to ensure the information given is accurate, we don't accept liability for any errors or mistakes which may arise. Specifications and other information in this document may be subject to change without notice.