

IEEE 802.11 ac/a/b/g

WLAN Client Adapter

QUICK START GUIDE

Version 1.0

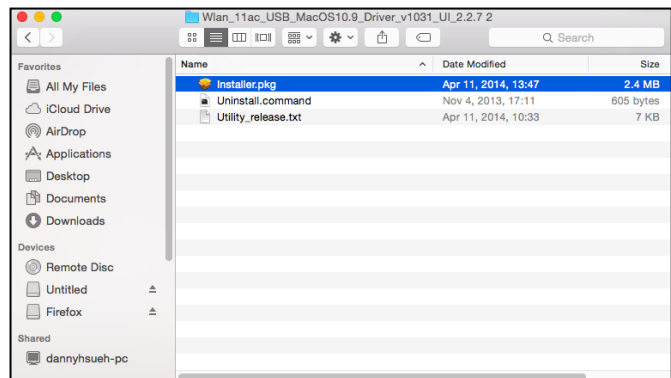
1. BOX CONTENTS

- ◆ Wireless LAN Adapter
- ◆ Quick Start Guide
- ◆ Driver CD

2. INSTALL DRIVER/UTILITY

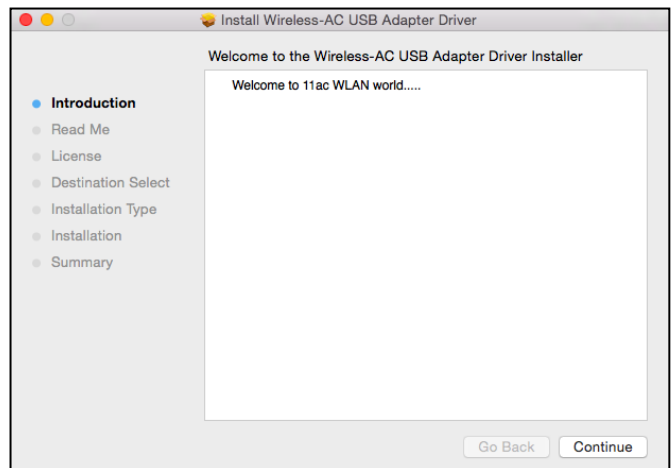
Step 1: (Mac only)

Insert the installation CD into your CD-ROM. Select accord your Mac OS version driver and check **Installer.pkg**.



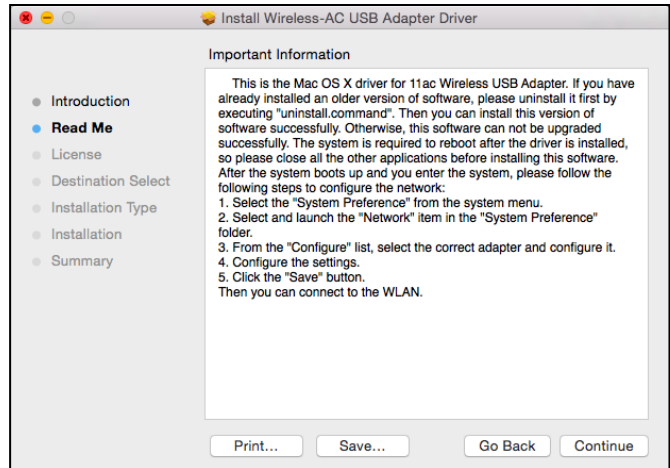
Step 2:

Follow Wizard guide check **Continue**.



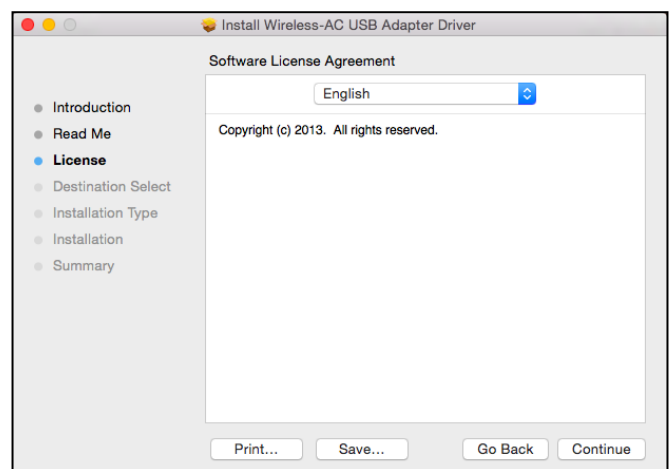
Step 3:

Wizard is display Read Me important information. Click **Continue**.



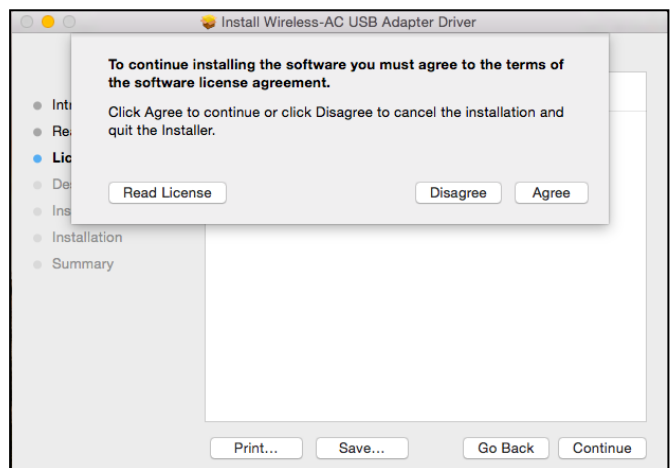
Step 4:

Wizard is display License Agreement. Click **Continue**



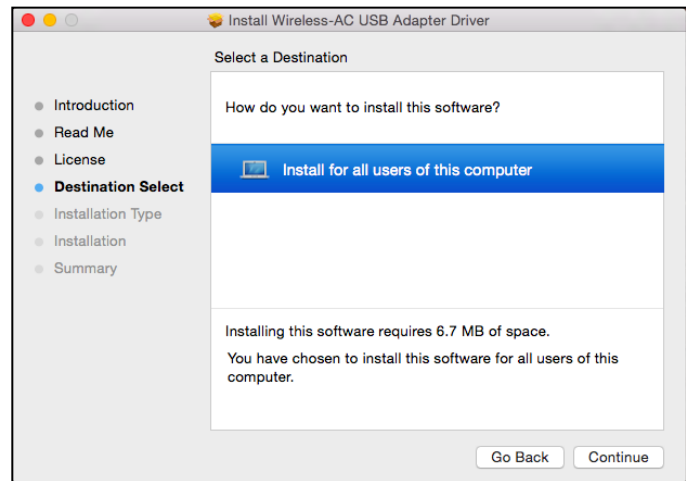
Step 5:

Wizard is display License Agreement. Click **Agree**.



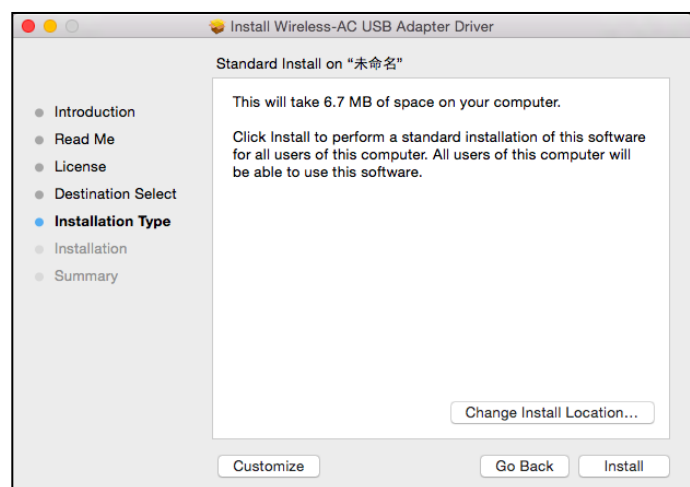
Step 6:

Wizard is display Select destination. Click **Continue**.



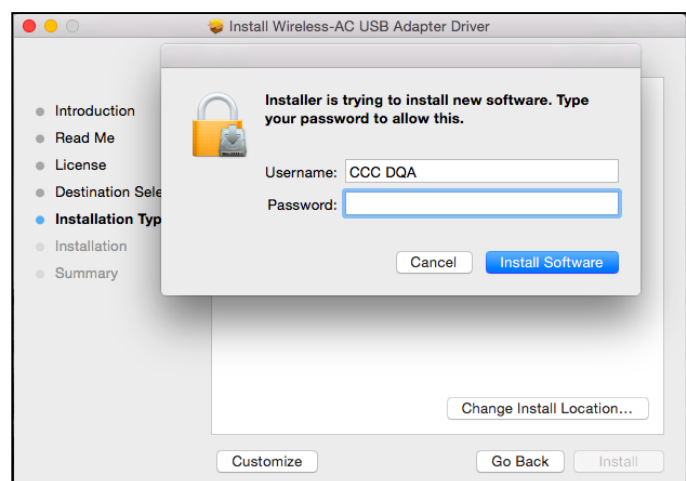
Step 7:

Wizard is display Installation Type. Click **Install**.



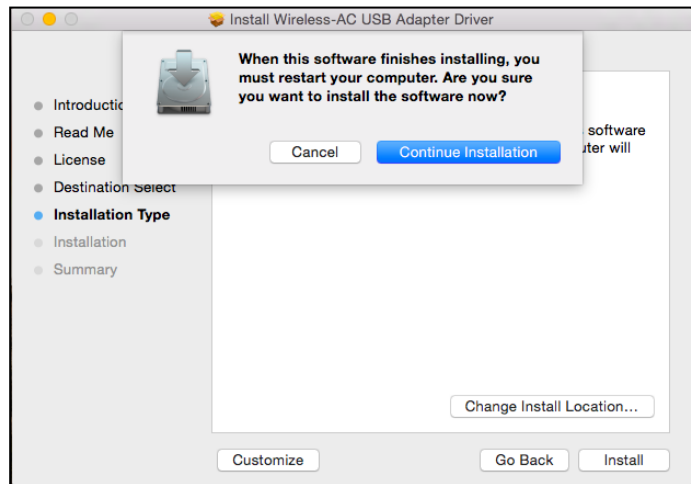
Step 8:

Please type your password to allow driver. Click **install software** and then check install.



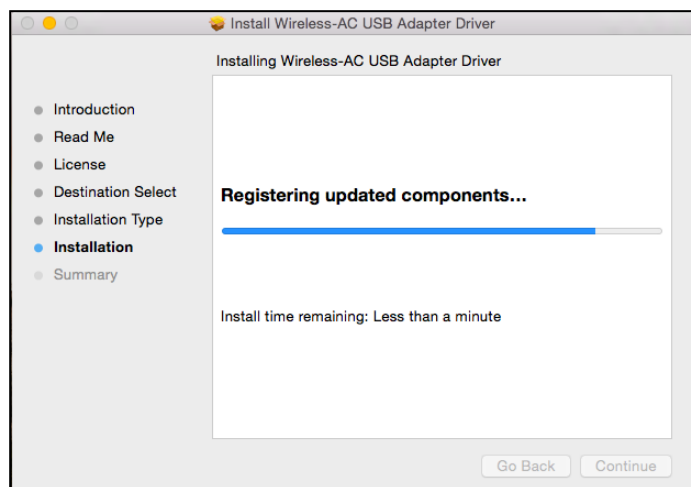
Step 9:

Wizard is displaying installation type when finished it will restart. Click **Continue installation**.



Step 10:

Installing & configuring WLAN driver and utility.



Step 11:

Summary will display the installation was successful please check **Restart**.

